

How to setup your UDR444 for remote viewing via Skype™

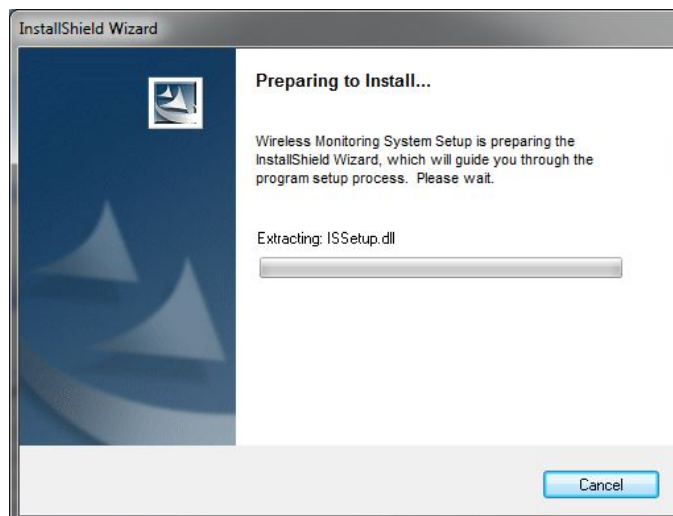
Requirements

- Two Skype™ accounts
- A PC computer
- A second computer OR separate Skype™ ready device (I.E. Android or Apple phone/table)
- Uniden Model UDR444, Wireless Video Surveillance Camera

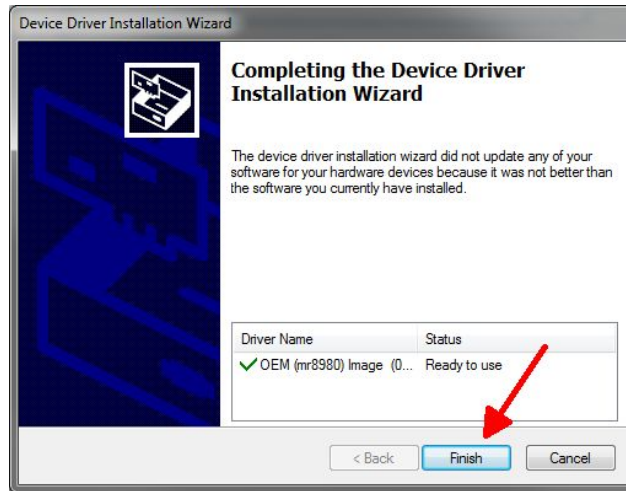
1. Follow the owner's manual instructions for *Viewing On Your Computer* (see page 28 of owner's manual).
 - a. Insert the CD included in your package into your PC.
 - i. Select the USB Driver file and double-click to run the program



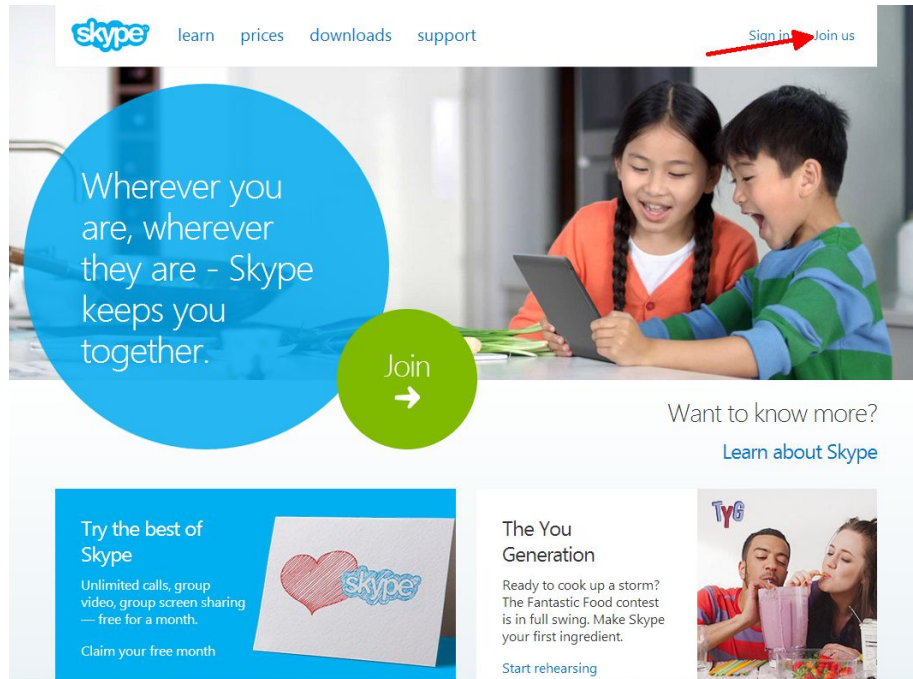
- b. Follow the instructions from the InstallShield Wizard.
 - i. For Windows:



- ii. For Windows: Select *Finish*, completing the installation.



- c. Connect your home computer to the monitor with the USB cable (included). The monitor screen goes blank. Your UDR444 system is now connected to your PC.
2. Setup a **NEW** Skype™ account specifically for your UDR444. **DO NOT USE AN EXISTING ACCOUNT**. A second personal Skype account is required to view camera video. (Simplified instructions can be found on page 29 of the owner’s manual).
- a. Go to www.skype.com and click on the **Join Us** link in the top right corner.



- b. Fill out the profile information requested by Skype™ and click the **I agree – Continue** button at the bottom of the page. The **Skype Name** will be the name you wish to use for your UDR444 system.

How do you intend to use Skype?

Select

Skype Name*

Note: only choose a name you have a right to use.

Password* Repeat password*

Between 6-20 characters, include Latin letters and numbers. Note: no-one else can see your password.

Inform me about new products, features, and special offers. When you sign up for SMS notifications, our first SMS will allow you to get Skype on your mobile (where applicable, your operator may charge you for receiving SMS messages).

By SMS

By email

iron anies to

Can't read the text in the box?

Refresh Listen Help

Type the text above here*

Yes, I have read and I accept the [Skype Terms of Use](#) and the [Skype Privacy Statement](#)

I agree - Continue

- c. Download Skype™ for Windows®. For Windows 8 machines, you must download Skype for Windows desktop. The native Skype “app” is not compatible.

skype learn prices downloads support mmemo41 Sign out

My account

Mr. Nemo

Profile completeness 70%

Get more from Skype with a Premium account.

\$0.00 Find out what you can do with Skype Credit.

No subscriptions + Add subscription

Redeem voucher

Hi Mr., your Skype account is ready
Now you'll want to download Skype - it's quick and easy.

Download Skype for Windows ↓

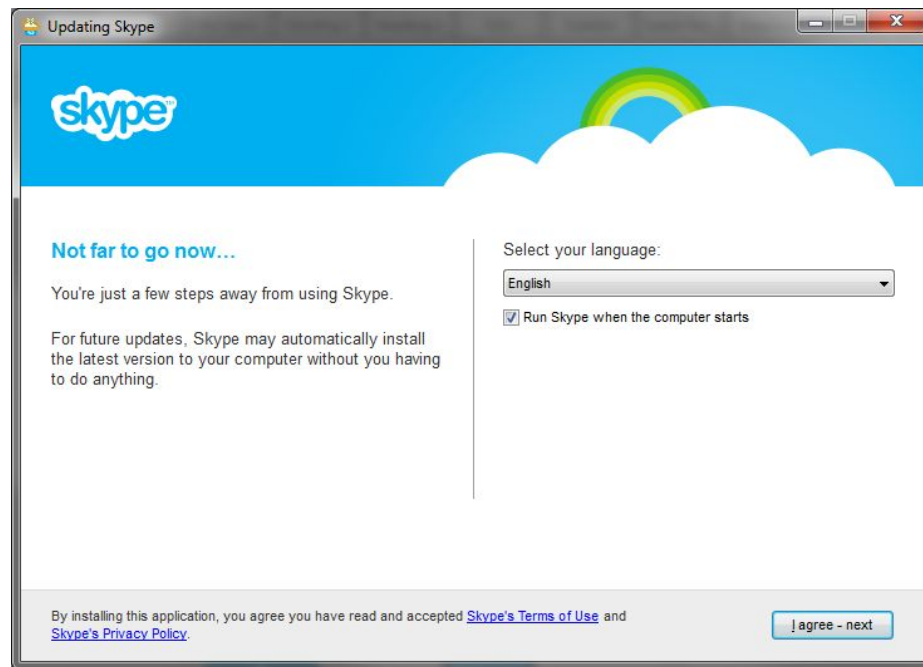
Download a different version

Account details Manage features

Profile Account settings Billing & payments

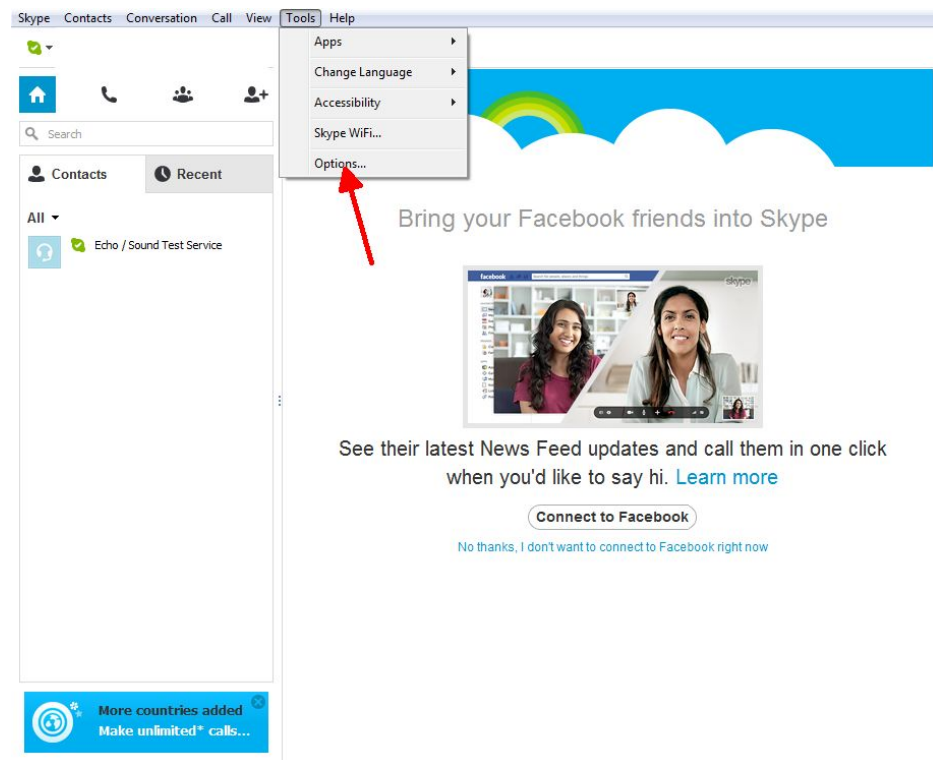
ID

- d. Install Skype™ using the Install Wizard.

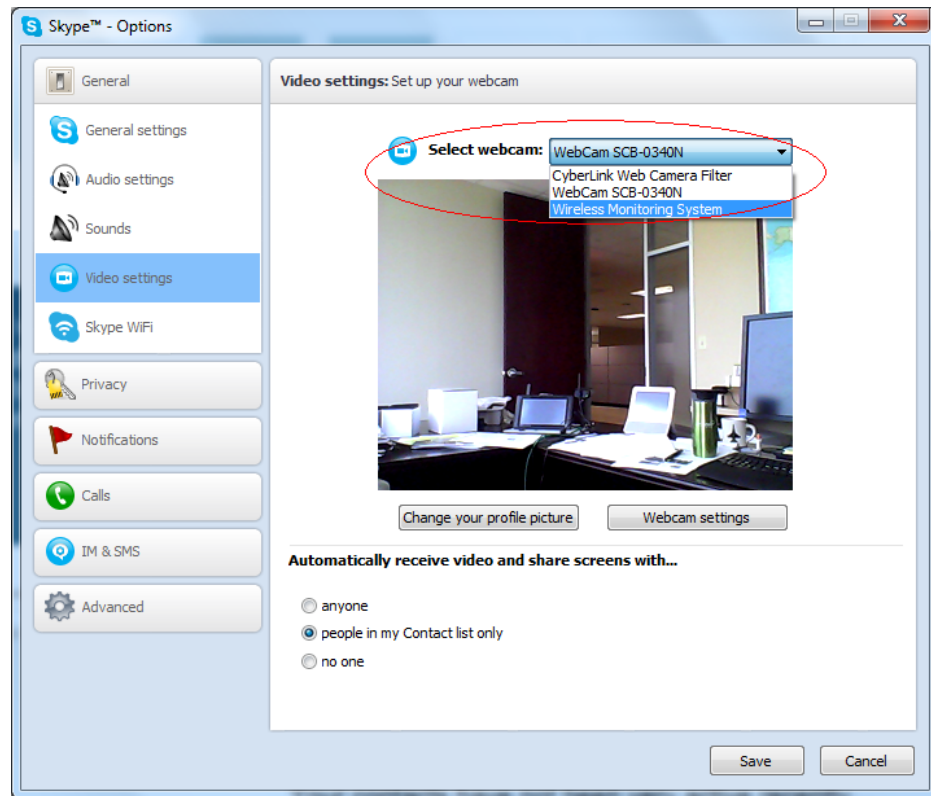


- e. Once installed and logged in, Skype™ should have setup the camera automatically (as long as the camera was still plugged into your computer as mentioned above during setup. Step 1.c). If your computer already has a web cam setup or you don't see video from your UDR444, you will have to go into **Tools, Options, Video settings** to select the correct camera.

- i. Click the **Tools** menu and select **Options**.

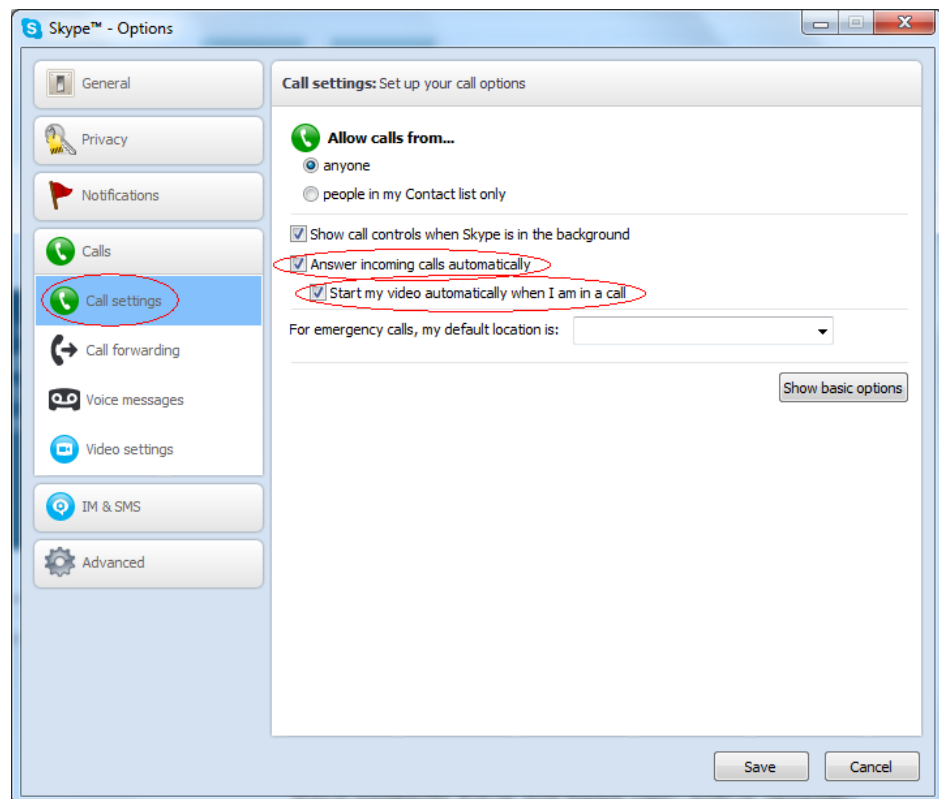


- ii. Select **Video settings** and then select **Wireless Monitoring System** in the **Select webcam** dropdown box.

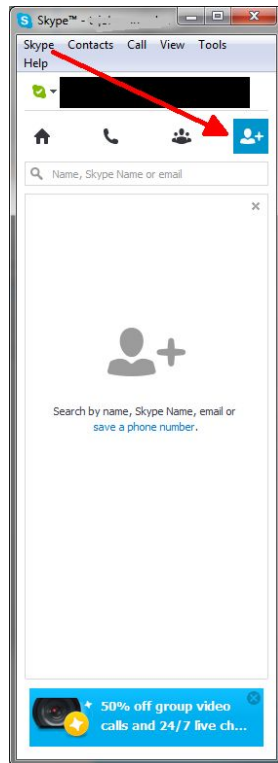


f. Next, you will need to setup Skype™ to “Auto Answer” .

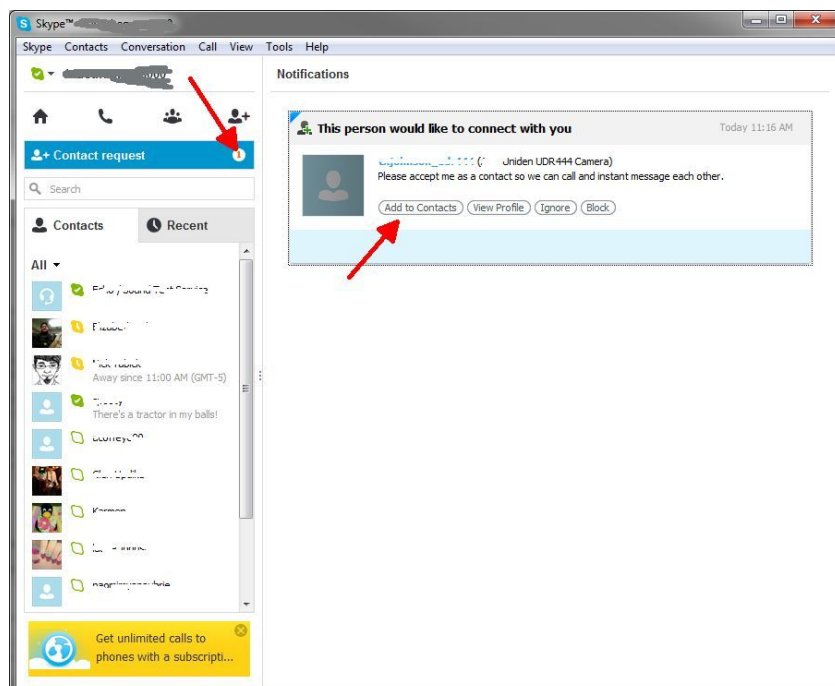
- i. In the Call settings screen check the **Answer incoming calls automatically** and the **Start my video automatically when I am in a call** options.



3. Invite your second Skype™ account into your contacts by clicking the **Add Contact** button.



4. On another device log into second Skype™ account and accept the invitation.
If you do not have a second Skype™ account you will have to create one by following the instructions above (sections 2.a and 2.b).



- From your second Skype™ account, on a different device call your first Skype™ account that you just added to your contacts list.

